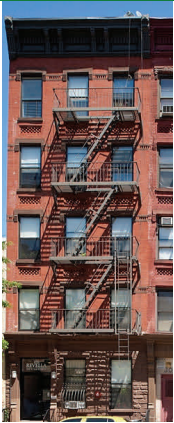


# Small Buildings Portfolio

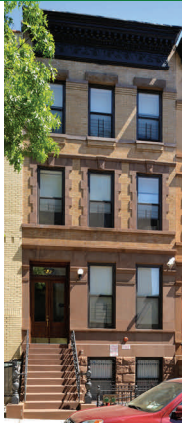
West Side Federation For Senior and Supportive Housing, Inc. (WSFSSH) owns and operates 7 small walk-up buildings in Harlem, and 2 additional small buildings on the Upper West Side. Each building has been completely renovated with new kitchenettes and bathrooms, new boilers and wiring, energy efficient windows, video monitored security, and fire detection and sprinkler systems. Porter service and 24 hour on-call super are provided in each building. Social services are available to tenants in all these buildings. Tenants include formerly homeless persons and community residents.

## The Revella



**307 West 116th St.**  
(Frederick Douglas)  
19 studio apartments.  
Opened  
September 9, 2004

## 147th Street

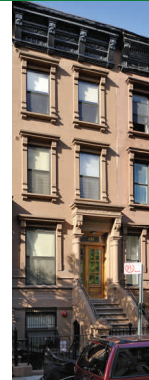


**459 West 147th Street**  
(Amsterdam and Convent)  
8 studio apartments.  
Opened  
November 3, 2006

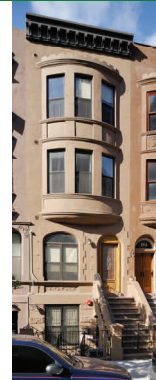
## The West 120's Cluster



**233**  
**West 120th**  
**Street**  
8 units



**134**  
**West 123rd**  
**Street**  
7 units



**152**  
**West 123rd**  
**Street**  
6 units



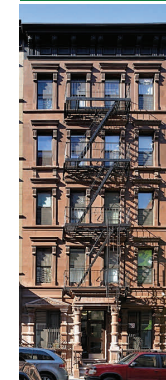
**29**  
**West 126th**  
**Street**  
8 units



**66**  
**West 126th**  
**Street**  
8 units

The West 120's Cluster has a total of 37 units, almost all studios. The first tenant at the West 120's Cluster moved in September 12, 2008.

## The West 80's



**209**  
**West 84th Street**  
← 20 units  
44  
**West 87th Street**  
↓ 17 units



84th St.'s 20 units include studios, one and two bedroom. West 87th St. has 8 permanent studios and 9 transitional SRO units. The first residents moved in January 2010.



The Small Buildings Portfolio is part of the West Side Federation For Senior and Supportive Housing, Inc. (WSFSSH). The mission of WSFSSH is to provide safe, affordable housing with supportive services within a residential setting which enhances the independence and dignity of each person. Since 1976, WSFSSH has been developing a spectrum of low income housing units. Today WSFSSH serves over 1,700 persons, with additional units in development.

**For further information about  
The Small Buildings Portfolio**

call Wanda Hernandez  
At the Small Buildings Portfolio  
212-721-6032, ext. 1060  
whernandez@wsfssh.org

